

## FS Series SuperFlex™ Clay Treater Housings



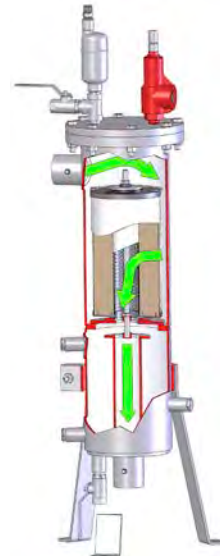
Facet's standard carbon steel FS Series SuperFlex™ housings are small economical housings that can be used as clay treaters, but at lower flow rates than our standard F Series housings.

### Standard Housing Design

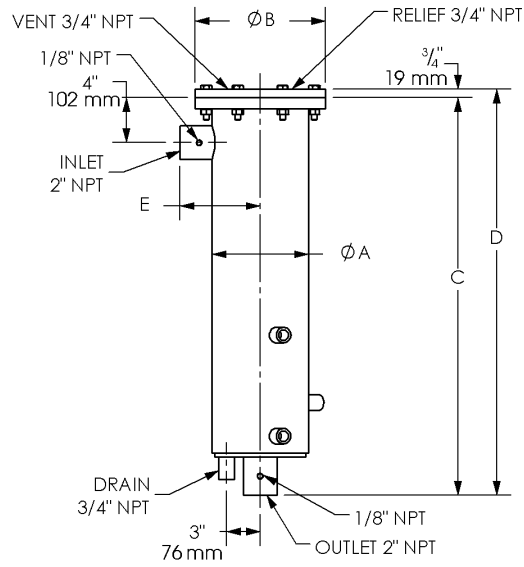
- Welded carbon steel construction—other materials available on request
- ASME Code, Section VIII construction, stamped and certified
- Design pressure: 250 psi @ 250 °F (17.2 bar @ 121 °C)
- Main closure: Blind Flange
- Head gasket: Buna-N—other materials available on request
- Vent connection: ¾" NPT
- Drain connection: ¾" 3000# NPT
- Inlet and outlet connections: 2" 3000# NPT
- Differential pressure gauge connection: ½" NPT
- Interior: Epoxy coated (EI 1541)
- Exterior: Prime coated

### Options

- Automatic air eliminator
- Automatic air eliminator check valve
- Manual drain valve
- Pressure gauge assembly
- Pressure relief valve
- Sampling probes
- Adjustable support stand



# FS Series SuperFlex™ Clay Treater Housings



## DATA

MODEL NUMBER	JET FUEL		DIMENSIONS										WEIGHT		LIQUID VOLUME	
			A		B		C		D		E					
	gpm	lpm	in	mm	in	mm	in	mm	in	mm	in	mm	lbs	kg	gal	ltr
FS-2C-A	7	26	8 <sup>5</sup> / <sub>8</sub>	219	11 <sup>5</sup> / <sub>8</sub>	295	49 <sup>7</sup> / <sub>8</sub>	1267	50 <sup>5</sup> / <sub>8</sub>	1285	7 <sup>1</sup> / <sub>8</sub>	181	125	56	10	38
FS-3C-A	14	52	8 <sup>5</sup> / <sub>8</sub>	219	11 <sup>5</sup> / <sub>8</sub>	295	63 <sup>7</sup> / <sub>8</sub>	1620	64 <sup>5</sup> / <sub>8</sub>	1641	7 <sup>1</sup> / <sub>8</sub>	181	200	90	13	49

FS-2C-A will hold (1) C-766-4 Clay Canister  
 FS-3C-A will hold (2) C-766-4 Clay Canisters