

HCS Series

Horizontal Coalescer Separators for Mobile Equipment (End Opening)

✓
EI 1581
Cat. M

EI 1581, 7th Edition, Category M, Type S-LW

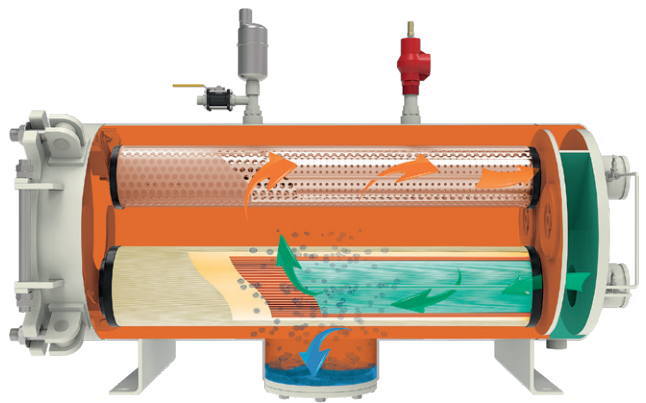
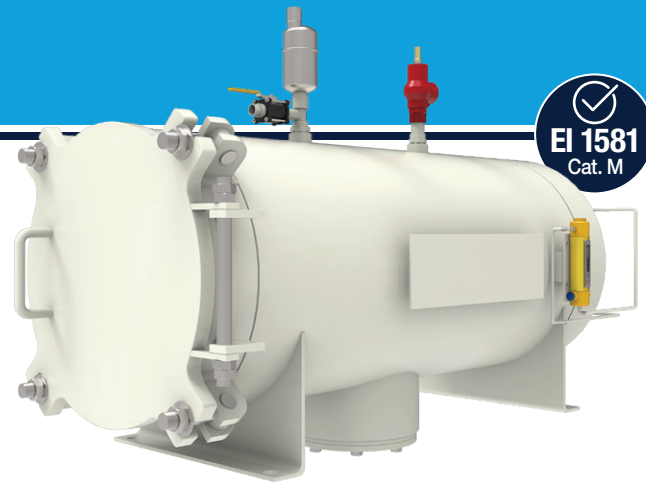
Category M Type S-LW coalescer-separator housings are engineered for military mobile fueling operations where minimal water and particulate contamination are expected. These integrated dual-stage systems deliver superior fuel-water separation and solids removal with industry-leading flow rates in a compact, lightweight design.

Key Features

- Qualified to EI 1581 (7th Edition) for Category M, Type S-LW applications in horizontal configurations when combined with Facet CMHF coalescer cartridges and SMHF separator cartridges
- Approved for use with all Category M fuels
- Built to EI 1596 and ASME Code, Section VIII standards
- Welded carbon steel construction with epoxy-coated interior for durability and corrosion resistance
- Flanges or Victaulic inlet/outlet connections for quick-connect system integration
- Choice of rod or screw base coalescer cartridge mounting styles
- Hinged end-opening cover with swing bolt closures for easy access and maintenance
- Knife edge cartridge mounting seals to minimize bypass risk
- Support plates for cartridge stability
- Permanent inlet, outlet, and drain connection markings for field identification

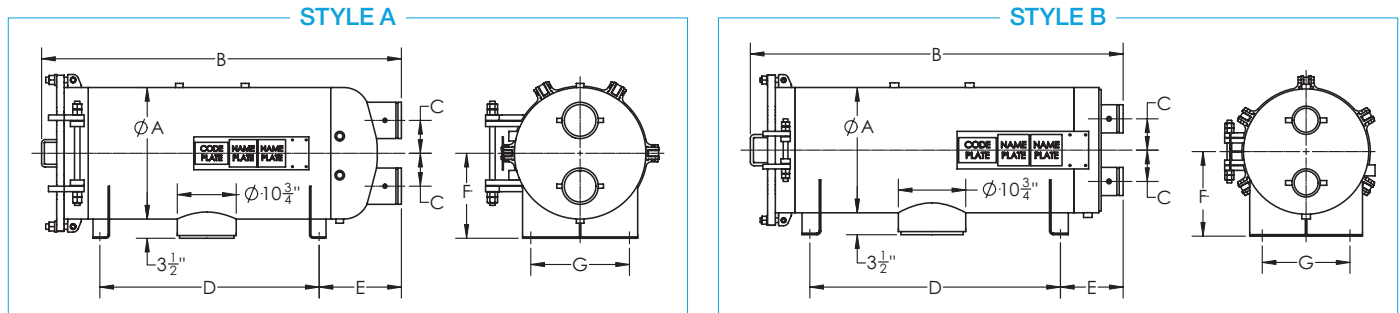
Specifications

- **Design Pressure:** 150 psi @ 250 F (10.3 bar @ 121 C); other pressures available
- **Interior:** Epoxy Coated (EI 1541)
- **Exterior:** Prime Coated (Other Finishes Available)
- **Closure Seal:** Buna-N O-Ring
- Hydrostatic Test Pressure for Chambers per EI
- Automatic Air Eliminator with Check Valve
- Pressure Relief Valve
- Differential Pressure Gauge
- Connections for Water Defense System and Sampling Probes
- 4" Inlet/Outlet connections available (when design permits)
- Nameplate Stamped with EI-classified Data



HCS Series

Horizontal Coalescer Separators for Mobile Equipment (End Opening)
EI 1581, 7th Edition, Category M, Type S-LW



Data

Model Number ⁽¹⁾	Flow Rate Aviation Fuel EI 1581 Cat. M, Type S-LW	Coalescer Cartridges		Separator Cartridges		Housing Liquid Volume	Housing Dry Weight	Housing Type
		Qty	Model	Qty	Model			
HCS-322-1424	193 gpm (730 lpm)	3	CMHF-22SB	1	SMHF-424FB	27 gal (102 ltr)	350 lbs (159 kg)	Style B - Flat
HCS-333-1436	300 gpm (1135 lpm)	3	CMHF-33SB	1	SMHF-436FB	33 gal (125 ltr)	375 lbs (170 kg)	Style B - Flat

Other sizes available upon request

Dimensions

Model Number ⁽¹⁾	Inlet/Outlet Diameter	DIMENSIONS ⁽²⁾						
		A	B	C	D	E	F	G
HCS-322-1424	3" (76 mm)	16" (406 mm)	39 3/4" (1010 mm)	5" (127 mm)	21" (533 mm)	9 3/4" (248 mm)	11 1/2" (292 mm)	11" (279 mm)
HCS-333-1436	3" (76 mm)	16" (406 mm)	50 1/2" (1283 mm)	5" (127 mm)	28" (711 mm)	10 3/4" (273 mm)	11 1/2" (292 mm)	11" (279 mm)

REFERENCE NOTES:

- (1) Model numbers include housing and required cartridge mounting.
- (2) Dimensions are approximate and should not be used for installation purposes.